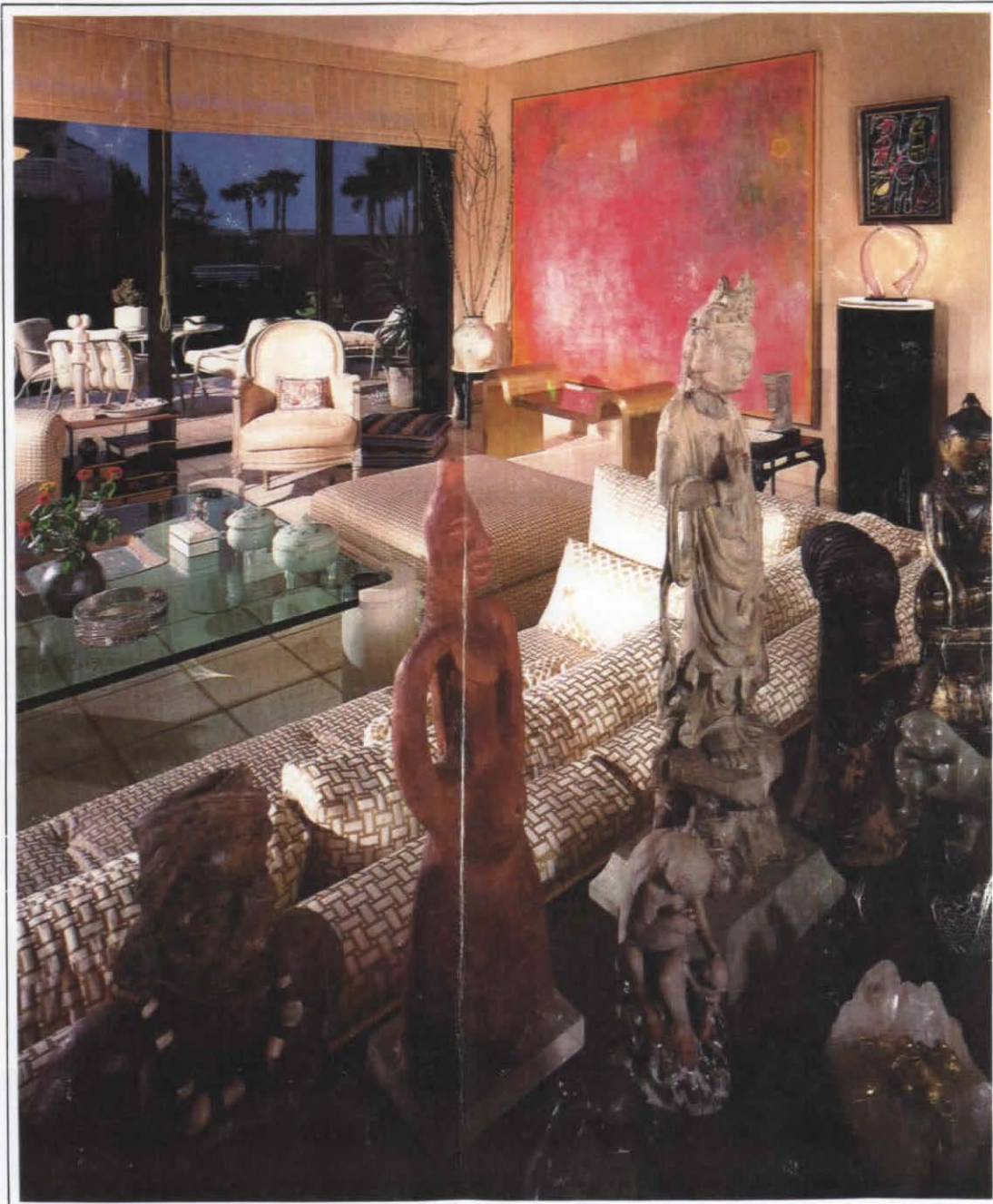


PALM BEACHES

MAY 1983



Designing with Art—In the Home and on the Table
• Corsica—Bliss in the Mediterranean • Special
Nature Foldout—Florida's Flowering Trees
• Deedy Marix—Palm Beach's First Woman Mayor

Right: A melange of art forms makes for pleasurable dining with soft light from an antique Japanese lantern. Hafner dinner service from Carani sits on a goatskin table. Beneath the Gene Davis painting is a sculptured glass head by Pascal.

Personal Style — *A* Movable Feast of Art Forms

BY DORIS KIDDER JOHNSON/PHOTOS BY KIM SARGENT

Billy Baldwin, the decorator par excellence, has said there are only three or four women in any city who have marvelous taste and who know exactly what they want. They are, according to Baldwin, the select few who do not need a decorator. In Palm Beach, Anita James Rosen must be one of those women. Her home is a movable feast of art forms arranged with her personal signature. Art is everywhere. And in the skillful hands of Ms. Rosen, art is an integral part of daily living. It is selected with confidence and arranged with self-discipline. She knows instinctively when a setting is complete and when "just one more" would be too much. "I remember even as a little girl having an appreciation for beautiful things," she says. "And it was not a casual interest. It was a serious fascination with the creation of art."

Anita Rosen's style is her own. Antiques selected from all parts of the world blend harmoniously with the ultimate furniture designs of Karl Springer. An antique Japanese lantern, at home on an old English console, moves to the table in the company of contemporary ceramics for an intimate dinner for two. Instead of flowers, a small sang de bouf vase holds sprigs of willow. "I prefer art on the table," says Ms. Rosen, "and fresh flowers in special places throughout the room." At Carani, her shop in the Esplanade, art on the table is the specialty; and nothing is displayed that would not be used in her own home. Though her lifestyle and taste are a tribute to the creativity of others, her personal style brings those creations to life. □





Left: A collection of crystal sparkles above the Louise Nevelson sculpture flanked by paintings of Jacob El Hanana. A Kenneth Nolan graphic defines the area which serves as the music center. **Below:** Subtle contrasts mark the bedroom where pink moire taffeta walls and ceiling mix with casual pink shutters. The bold abstract painting by Hutner is a colorful counterpoint to the Bessarabian carpet. Bed and sofa fabric is cotton sateen quilted in color.



Left: Deep shiny tortoise vinyl provides a stunning background for the Fortuni cotton print of the sofa beds and the Brunschwig and Fils covered French chair. A bowl from Carani and an Agam sculpture grace the hand-painted cocktail table from Kari Springer. A tiny needlepoint turtle surveys the garden. **Above:** Marbleized wallcovering lends continuity and spacioussness in a sleek marble bathroom. The unusual portrait is by Lynn Hershman and the sculpture beneath is by Kosso Elool.