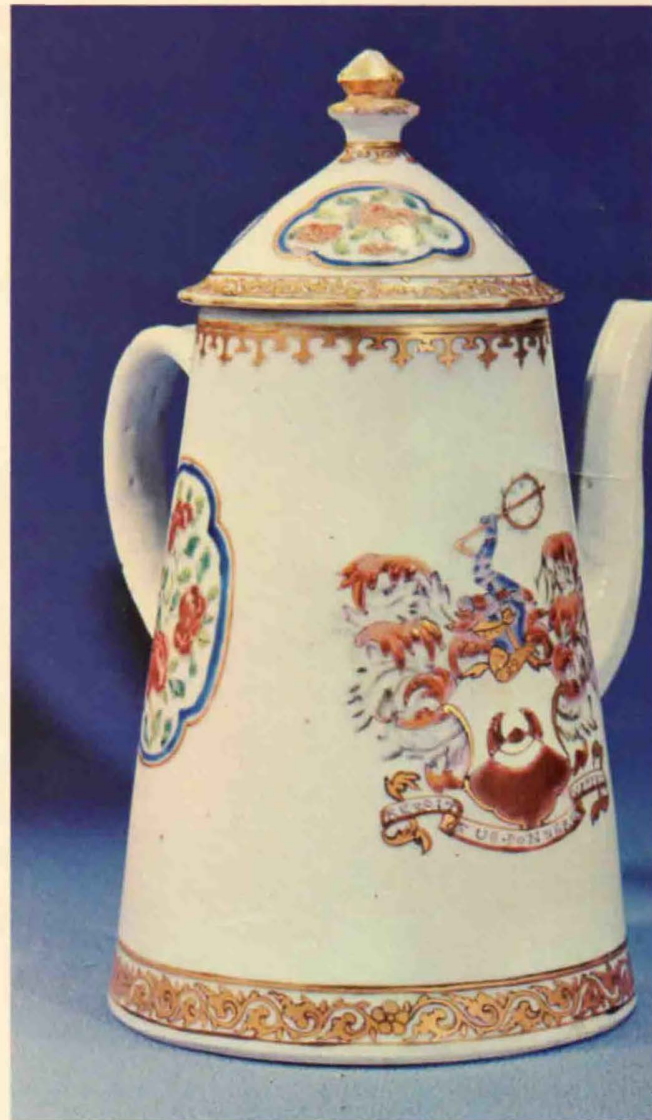






# Chinese Armorial Porcelain



David Sanctuary Howard

## P20 · BURGOINE

Ch'ien Lung c. 1750

The arms are of Burgoine, *Gules a chevron or between three talbots argent, on a chief crenellée of the last as many martlets azure*, with the Burgoine crest, *A talbot sejant or*.

The correct crest should be *argent* for these arms, which are those borne by the Burgoine baronets of Sutton Park in Bedfordshire. Another Bedfordshire branch of the family bore the coat with the chevron argent but the crest with the *talbot or eared sable and collared gules*.

In July 1641 Sir — Burgoine was created a baronet, a title now extinct. Sir Roger Burgoine married about 1750 Lady Frances Montague, eldest sister of George, last Earl of Halifax, who was, later in the decade, First Lord of Trade (see L5).

*Illustration Phil. Cooke Collection; Christie's October 1967, similar teapot 130 gns.*



## P20 · IMPEY

Ch'ien Lung c. 1750

The arms are of Impey, recorded as *Gules on a chevron between three leopards' faces or as many cinquefoils of the field* (here painted crescents); and crest of Impey of Yarmouth, *A leopard's face sable between two wings or*.

The coat recorded is of the Impey family of Hammersmith, and it seems likely that the Yarmouth family was a cadet branch. The family of Impey-Lovibond of Newhall, Ardleigh in Essex, bore a similar crest with the leopard's face in front of a sword.

George Lovibond of Hatfield Peverel in Essex was the son of Edward Lovibond and grandson of Mr. Lovibond, a merchant and East India Company director. He married in March 1793 Martha, eldest daughter of Sir Elijah Impey, for whom this service was almost certainly made. The arms are identical to a Franks bookplate 15995 for 'Elijah Impey' and to Viner 2199, 'Sir Elijah Impey'.

*Illustration Mrs. Elinor Gordon, Villanova, Pennsylvania.*



## P20 · MASONIC—PREMIER GRAND LODGE

Ch'ien Lung c. 1750

The coat is of the Premier Grand Lodge of the Freemasons' Society, *Sable, on a chevron between three towers argent a pair of compasses open chevronways of the first*; crest, *A dove proper*. The supporters, which are not shown here, are two beavers.

The Premier Grand Lodge, which was founded in 1717, united in 1813 with the 'Antients' Grand Lodge (see P12) to form the United Grand Lodge of England, and this coat impaled that of the 'Antients'. In 1919 a bordure was added, *Gules charged with eight lions passant gardant*.

The 'Antients' had services or punch bowls made for them about two decades later (see P11 and R11).

*Illustration, Museum of the Grand Lodge of England; T-C 1927, thirteen-piece tea service £35 comprising: teapot, coffee pot, milk jug and cover, teapot and cover, basin, four tea cups.*

